



Report Runner Viewer INI and Command Line Technical Documentation



REPORT RUNNER VIEWER



Last Revised July 9, 2007



Report Runner Viewer INI and Command Line Technical Documentation

INI OPTIONS

Modification of the Jeff-Net Report Runner Viewer (JNRRV) INI file `jnreportrunner.ini` allows you, the report administrator, to customize the viewer to meet your company's and end user's needs. This document will explain the various INI settings available. It is meant to be a quick reference, and is hopefully short, sweet, and to the point. All of these settings are optional. If you don't fully understand what they do, just let us know, or give them a try; you can't hurt anything. © For the options in the INI file, for the ones that require a 1 or 0, 1 is the same as 'Yes' and 0 is the same as 'No'.

1) Set a custom location for the INI file

By default, the application will look for the INI file in the application directory, where `JNRRE.EXE` is installed. We have a new registry setting that lets you override the location of the INI file. This is useful for hiding your settings from the user, or using one INI file for everyone on the network (by placing the INI file on the network). You may override this setting by adding the following registry setting (Don't forget to put full path AND INI file name):

```
HKEY_CURRENT_USER
- SOFTWARE
-- VB AND VBA PROGRAM SETTINGS
--- Jeff-Net
---- Jeff-Net Report Runner
----- INIPath set to whatever path/file value: C:\winnt\system32\jnreportrunner.ini
```

2) Force JNRRV to exit after it views a report (does not work on Evaluation version)

This option will only work when not running reports from the main interface. ie. It works from Windows Explorer.

Under the [Options] group use:

```
ExitAfterReport=1
```

3) Save the password so the user doesn't have to enter it every time

Under the [Options] group use:

```
SavePassword=1
```

4) Set password character

This was added to help fix a minor bug with the encrypted password that is saved (using `SavePassword`). If you are having any problems saving your password, or the saved password not working to be more specific, add this INI setting. We recommend using 'x' as the character. Do NOT use a capital letter, and it needs to be only one character.

Under the [Options] group use:

```
PasswordCharacter=x
```



Report Runner Viewer INI and Command Line Technical Documentation

5) Remove the confirmation message after the report runs

Under the [Options] group use:

```
ShowConfirm=0
```

6) Remove the initial splash screen (does not work on Evaluation version)

Under the [Options] group use:

```
ShowSplash=0
```

7) Hide the Login, Database, and DSN information (and widens report list)

Under the [Options] group use:

```
HideRight=1
```

8) Hide the Drive and Directory (and widens report list)

Under the [Options] group use:

```
HideLeft=1
```

9) Enable refreshing of report data for saved reports

Under the [Options] group use:

```
ShowRefreshForSavedData=1
```

10) Disable the printer setup dialog box each time you print (will print to default printer)

Under the [Options] group use:

```
ShowPrinterSetup=0
```

11) Disable the export button completely

Under the [Options] group use:

```
ShowExportButton=0
```

12) Disable the group tree completely

Under the [Options] group use:

```
ShowGroupTree=0
```



Report Runner Viewer INI and Command Line Technical Documentation

13) Disable the first view buttons that allows you to view live data

This option will disable all three View buttons. The 4th View button is disabled using the setting below (#14).

Under the [Options] group use:

```
LockViewButton1=1
```

14) Disable the view button that allows you to view reports with saved data

This option will disable the 4th View button. The first three buttons are disabled using the setting above (#13).

Under the [Options] group use:

```
LockViewButton2=1
```

~~15) Disable the third button that allows you to view report information~~

~~Under the [Options] group use:~~

```
LockViewButton3=1
```

16) Disable the drive and directory selection

Under the [Options] group use:

```
LockBrowse=1
```

17) Disable the changing of the Database information on screen

Under the [Options] group use:

```
LockDatabase=1
```

18) Disable the changing of the Database information on screen

Under the [Options] group use:

```
LockDSN=1
```

19) Disable the changing of record selection

Under the [Options] group use:

```
LockRecordSelection=1
```



Report Runner Viewer INI and Command Line Technical Documentation

20) Exit the app if there is an error setting directory to locked down directory

If you have locked the end user to a specific directory using Path and Highpath settings, this setting will force the application to close if there is any kind of error getting to that directory. Without this setting, the application will default to the root directory. Generally the C: drive.

Under the [Options] group use:

```
ExitOnDirectoryError=1
```

21) Use ID and password saved in INI file for passed reports (command line)

For reports opened outside the Viewer interface, normally the ID and password in the INI file is not used. You can actually edit the registry setting for the .RPT file extension and put the ID and password parameters there. This INI option overrides those settings.

Under the [Options] group use:

```
UseINILogonToRunPassedReports=1
```

22) Prompt for ID and password on each report (outside of normal JNRRV interface)

This will cause the Viewer to prompt for the ID and password each time the report is run. Also, we would recommend using the HideRight INI option in conjunction with this one, or the constant prompting of the ID/password may get confusing for the end user. Additionally, you may want to turn on the ExitAfterReport option if you are using the Viewer to run reports off a web browser or dbl-clicking reports in Windows Explorer.

NOTE: Most users will not have a need for this option (since we already provide a way to change the ID/password each time on the 'base' interface), but we had a customer request it, so this is how we made it available.

Under the [Options] group use:

```
PromptEachReportForLogon=1
```

23) Use an alternate encryption scheme

Some users have problems with our default encryption scheme. This is an alternate version.

Under the [Options] group use:

```
UseAlternateEncryption=1
```



Report Runner Viewer INI and Command Line Technical Documentation

24) Set default viewer zoom value

The default value if a value is not specified is 100 (100%). Do not use the % sign, just a number value. To set the viewer to “full page”, use the value of ‘2’.

Under the [Options] group use:

```
ZoomViewer=2
```

25) Keep saved data if running from Windows Explorer

Saved data is discarded by default when you double-click a report template in Windows Explorer. If you would like to allow your users to be able to double-click a report template in Windows Explorer with saved data you will have to turn on this option. You may want to check out the option ShowRefreshForSavedData, too.

Under the [Options] group use:

```
KeepSavedData=1
```

*** The following options are for the [General] INI group ***

26) Lock users to a specific report directory (they can move forward, but not backward)

Under the [General] group use:

```
HighPath=T:\Reports\Accounting
```

If you’re doing this for the first time, make sure and set the **Path** INI setting to match this setting or you will get an error message the first time.

27) Lock users to a specific work directory (they can move forward, but not backward)

Under the [General] group use:

```
HighPathWork=C:\Temp\My Docs\Crystal Reports
```

If you’re doing this for the first time, make sure and set the **LastPathWork** INI setting to match this setting or you will get an error message the first time.

28) Set command line compatibility to “old style”

Command line options have changed for version 10. In older versions of JNRRV, you could pass the path, user ID, and password, but for this to work, you could not have any spaces in the input path of the report being passed. In version 10, there are some new ways to pass reports to the viewer, but by default, so you can set up shortcuts easily, the viewer will now expect only the report to be passed. If you have set up shortcuts or programmed external applications to work this old way, and you’re passing the ID and password the old way, then set OldStyle=1.

Under the [General] group use:

```
OldStyle=1
```



Report Runner Viewer INI and Command Line Technical Documentation

All of following INI settings are **saved automatically** by the viewer when you exit the application. If you lock, disable, or set certain options, you may need to populate these settings, too.

29) Change the default report extension from .Rpt to another 3 character extension

Under the [General] group use:

```
Ext=XXX
```

30) Change the default report extension message found below right side security settings

Under the [General] group use:

```
ExtMsg=Default Report Extension is .XXX
```

31) Last value of the No Security check box

Under the [General] group use:

```
Security=1
```

32) Last value of the DSN check box

Under the [General] group use:

```
DsnOn=1
```

33) Last value of the DSN check box

Under the [General] group use:

```
DatabaseOn=1
```

34) Last user ID used

Under the [General] group use:

```
ID=your user ID
```

35) Last password used (encrypted)

Note: Let JNRRV create the encrypted password and save it in the INI file. Then you can copy this password to any other INI files that need the same password.

Under the **[Options]** group use (we had this documented incorrectly as [General] for a long time):

```
Password=encrypted password
```



Report Runner Viewer INI and Command Line Technical Documentation

36) Last DSN used

Under the [General] group use:

```
DSN=dsn name
```

37) Last Database used

Under the [General] group use:

```
Database=database name
```

38) Last Path used

Under the [General] group use:

```
Path=T:\Reports\Accounting
```

39) Last Work Path used

Under the [General] group use:

```
LastPathWork=C:\Temp\My Docs\Crystal Reports
```



Report Runner Viewer INI and Command Line Technical Documentation

SAMPLE INI FILE (jnreportrunner.ini)

```
[General]
Path=X:\Shared Reports\Accounting\AR
Security=1
DsnOn=0
DatabaseOn=0
LastPathWork=C:\Exported Reports\Accounting
ID=creports
HighPath=X:\Shared Reports\Accounting
HighPathWork=C:\Exported Reports
```

```
[Options]
LockRecordSelection = 1
SavePassword = 1
LockViewButton2 = 1
HideRight=1
```



Report Runner Viewer INI and Command Line Technical Documentation

COMMAND LINE OPTIONS

You have three (3) sets of options with the command line processor:

- 1) Simply pass the report name; nothing special has to be done; this also enables you to easily set up short cuts by right clicking on a report and selecting Open With, then Jeff-Net Report Runner.
- 2) Set OldStyle=1 (see #28 above in INI options); then you can pass report name as long as the path has no spaces, and optionally the User ID and the Password.
- 3) There are some extended options available using keywords:
 - a) **jnreport**=the report path and name you want to pass (you can have spaces in the path)
 - b) **jnid**=the User ID
 - c) **jnpass**=the Password (note this value is **NOT** encrypted like in INI file)
 - d) **jnrecordselection**=the record selection using Crystal Reports syntax
 - e) **jnini**=the full path to the custom INI file that you want the application to use

Example Using All Parameters:

```
"C:\Program Files\Jeff-Net Report Runner Viewer\JNRRE.EXE" jnreport=x:\reports\report.rpt  
jnid=crystal jnpass=reports jnrecordselection={Customer.ID}=99
```

Example Using Just jnreport And jnrecordselection Parameters:

```
"C:\Program Files\Jeff-Net Report Runner Viewer\JNRRE.EXE" jnreport=x:\reports\report.rpt  
jnid= jnpass= jnrecordselection={Customer.State}='TX'
```

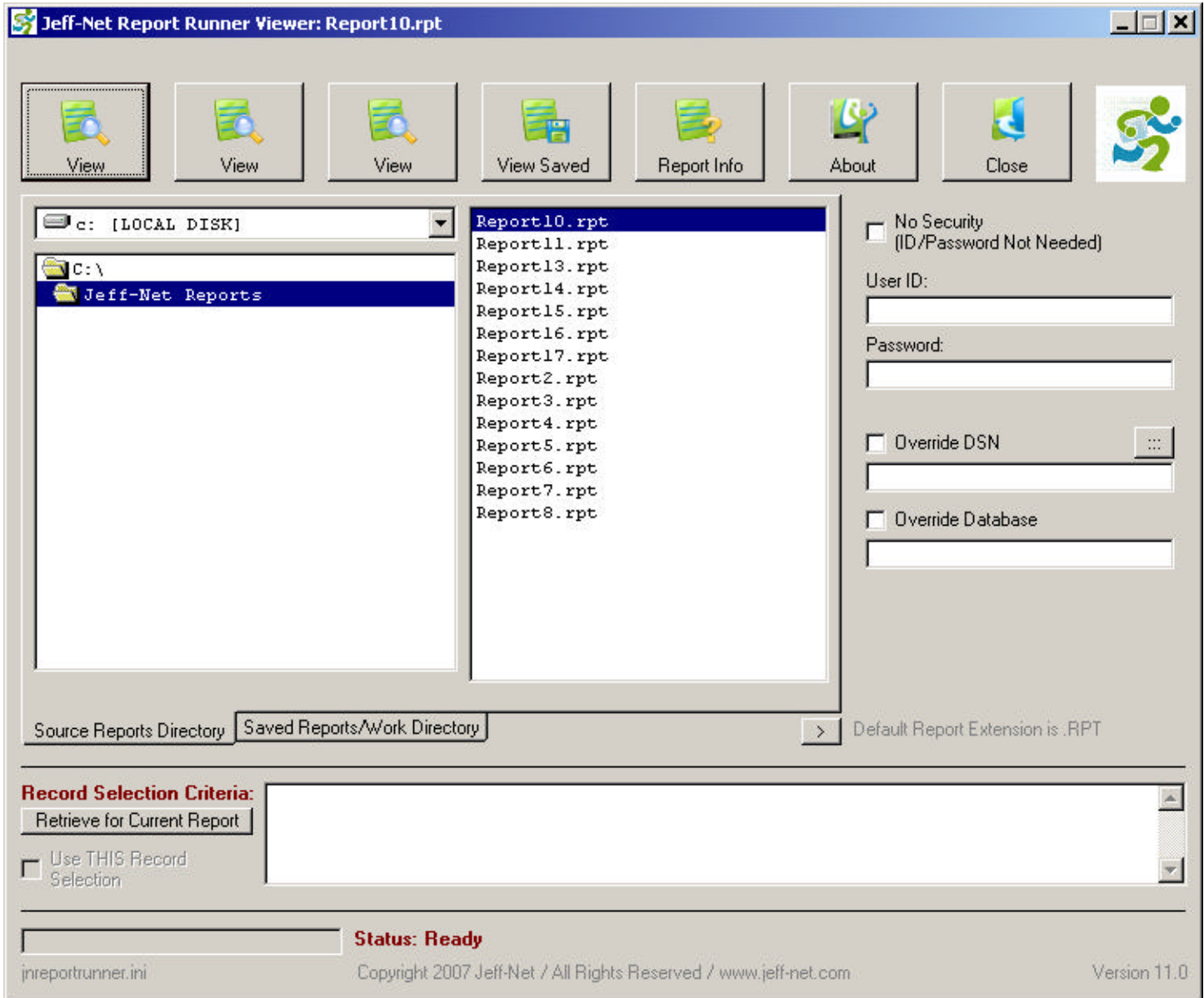
Related Info:

See INI option "UseINILogonToRunPassedReports"

Report Runner Viewer INI and Command Line Technical Documentation

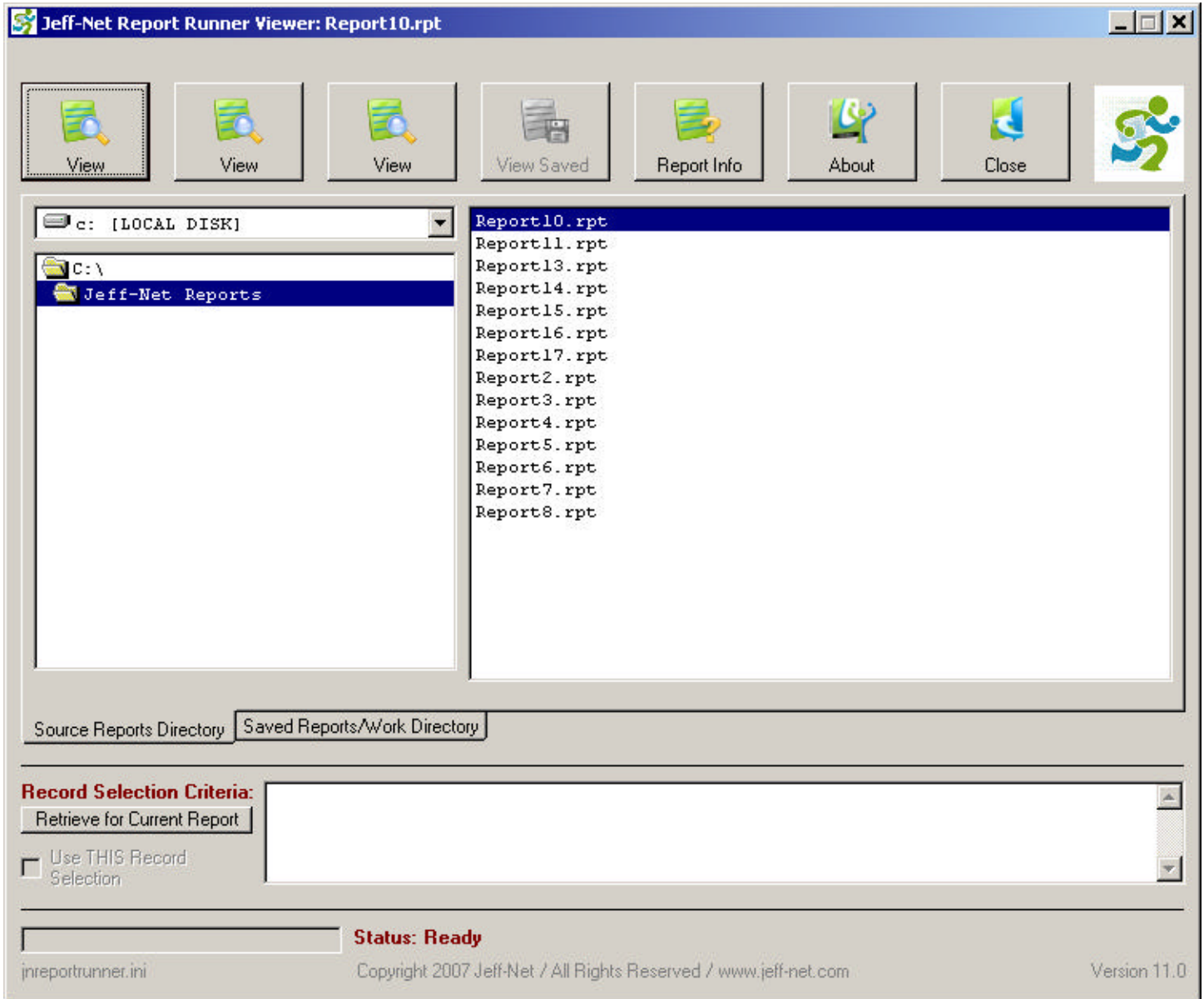
SCREEN SHOT EXAMPLES

Following are some screen shot examples based on various INI configurations:



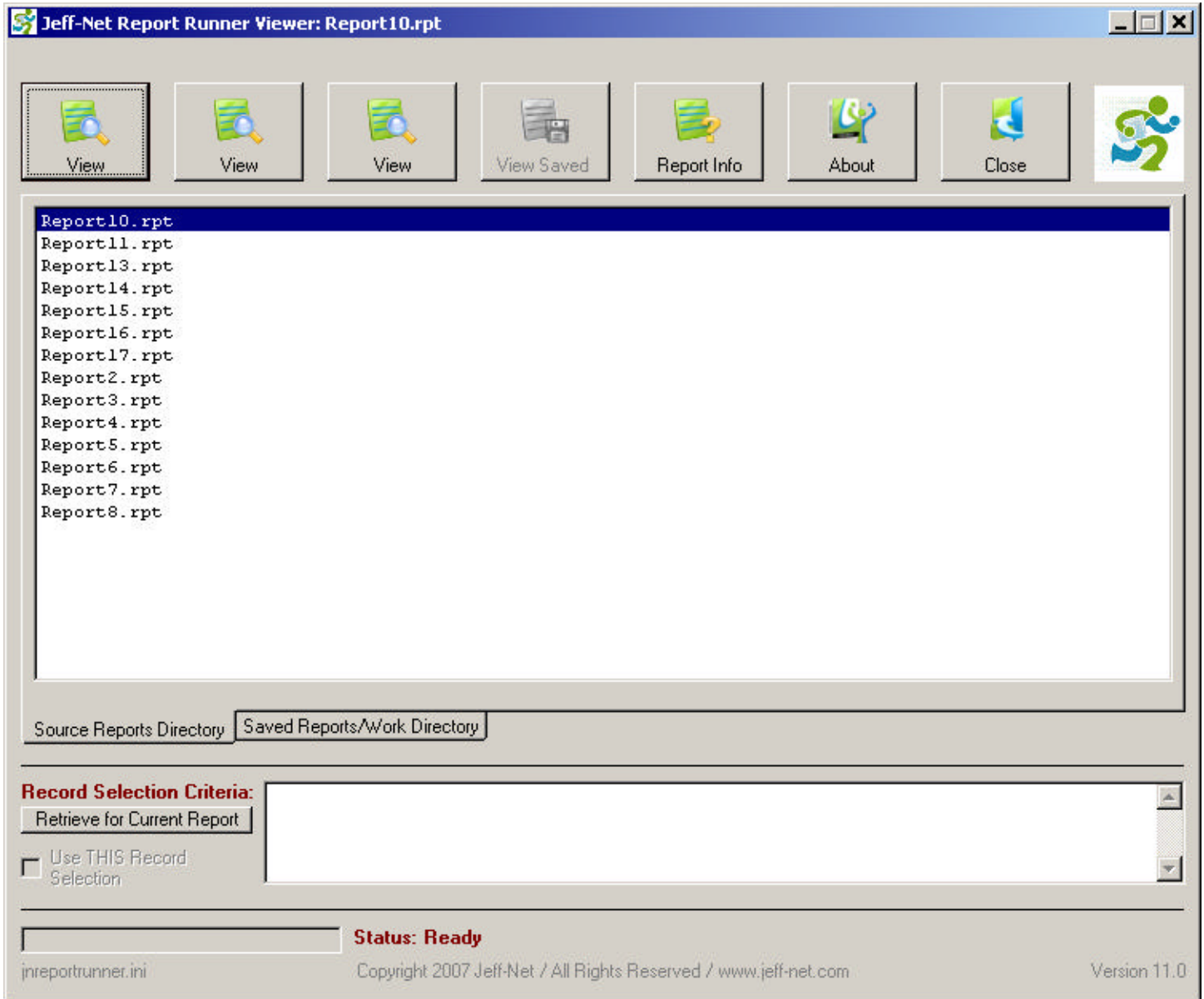
Screenshot Without Any Custom Configuration

Report Runner Viewer INI and Command Line Technical Documentation



Screenshot with the INI Setting 'HideRight' and LockViewButton2 both set equal to 1 (turned on)

Report Runner Viewer INI and Command Line Technical Documentation



Screenshot with the INI Setting 'HideRight' and 'HideLeft' both set equal to 1 (turned on)



Report Runner Viewer INI and Command Line Technical Documentation

NEW / RECENTLY ADDED INI OPTIONS

Following are any recently added INI settings or command line options:

A) Hide the 2nd and 3rd Viewer buttons

The older versions of our Viewer used to only have one View button at the top. For some users, they just don't want to see three View buttons at the top. To hide the other two, use the following setting.

Under the [Options] group use:

```
HideViewButtons2and3=1
```

B) Hide the View Saved Data Viewer button

This option hides the View Saved Data button. You can also disable this button, without hiding it by using the LockViewButton2 option.

Under the [Options] group use:

```
HideViewSavedButton=1
```

C) Slide remaining buttons together

With our two new options above, it will leave "gaps" in the buttons. This option moves the buttons closer together.

Under the [Options] group use:

```
slideButtons=1
```

D) Turn off the setting to ignore minor errors when viewing a report

There are some minor errors that occur when viewing a report. These are errors that normally SHOULD be ignored. That said, sometimes a report will display blank results in the Viewer without displaying any kind of error. If that happens, you may want to tell our Viewer NOT to ignore errors. The setting below is for that.

Under the [Options] group use:

```
IgnoreViewerErrors=0
```

Note: We do not recommend turning this setting off, unless you are trying to debug a problem with running a report. This option is ON (IgnoreViewerErrors=1) by default.



Report Runner Viewer INI and Command Line Technical Documentation

E) Use DSN and Database settings saved in INI file for passed reports (command line)

For reports opened outside the Viewer interface, normally the DSN and Database settings in the INI file are not used. This INI option causes them to be used.

Under the [Options] group use:

```
UseINIDSNandDatabaseToRunPassedReports=1
```

F) Hide/Remove Record Selection section

With this setting, you can completely remove the record selection options from the window (so it doesn't confuse your end users if you don't want them using it)

Under the [Options] group use:

```
HideRecordSelection=1
```

G) Hide Saved Report Directory tab

We make two directories available to run reports. These are identified by the tabs underneath the directories. If you don't want your users to use but one directory, you can completely hide the Saved Reports/Work Directory tab. Use the following setting for this.

Under the [Options] group use:

```
HideSavedReportsDirectory=1
```

H) Turn Urgent Message Checking off (by downloading from Jeff-Net website)

Now, in addition to the registry setting you can set to turn off urgent message checking, you can also do it with this new INI setting.

Under the [Options] group use:

```
SetUrgentUpdatesOff=1
```

I) Hide/Remove Printer Button

Use this option to keep your end users from printing reports

Under the [Options] group use:

```
ShowPrintButton=0
```



Report Runner Viewer INI and Command Line Technical Documentation

J) Set default Viewer “production” path

By default, the Viewer will remember the last path that you worked in and open the Viewer to that directory. With this setting, you can tell the Viewer to always open up this directory.

Under the [General] group use:

```
DefaultPath=c:\My Production Path
```

K) Set default Viewer “work/saved data” path

By default, the Viewer will remember the last path that you used for your saved data directory. With this setting, you can tell the Viewer to always open up this directory.

Under the [General] group use:

```
DefaultPathWork=C:\My Work Path
```

L) Define PROXY settings for FTP/HTTP connections (Ad-Supported Version)

With security being so important these days, most companies do not have ‘open’ internet connections anymore. Most use what is called a PROXY server. If you need to set up our products to work with your PROXY server, add these settings to the new [PROXY] INI group. You may only need to specify the first two lines as some companies don’t require the id and password.

Under the [PROXY] group use:

```
ProxyMethod=3  
ProxyHostname=yourproxyserver.yourcompanyname.com  
ProxyUsername=yourproxyid  
ProxyPassword=yourproxypassword
```

If ProxyMethod=3 doesn’t work for you, try ProxyMethod=4. There are some variations to the above settings, but these will work for most. If you have any problems, just let us know.

M) Convert null fields to default

By default, the Viewer does not turn on the Crystal Reports option Convert Null Fields To Default. If you have formulas that do not expect this, you will get data errors. If you have this option turned on in Crystal Reports, turn it on here.

Under the [Options] group use:

```
ConvertNullFieldToDefault=1
```